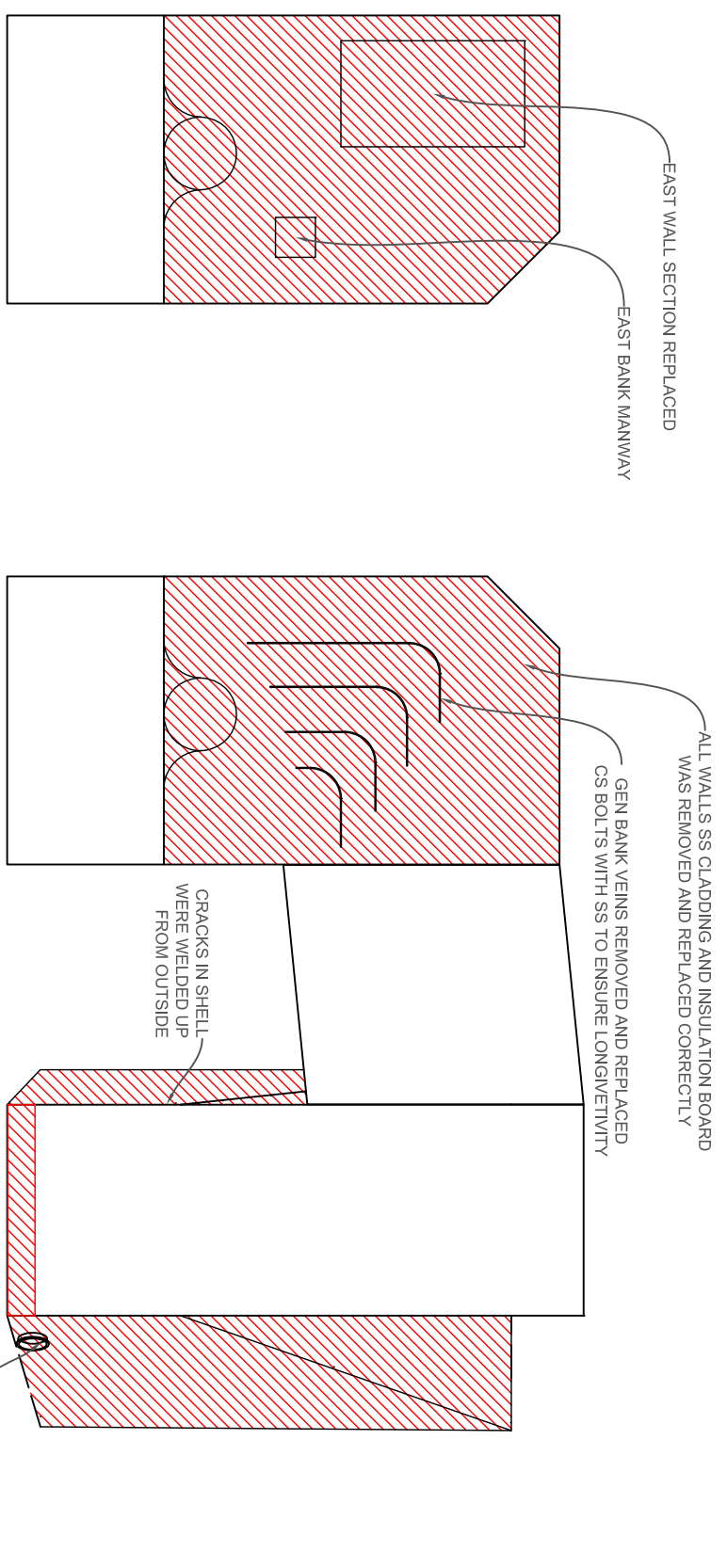


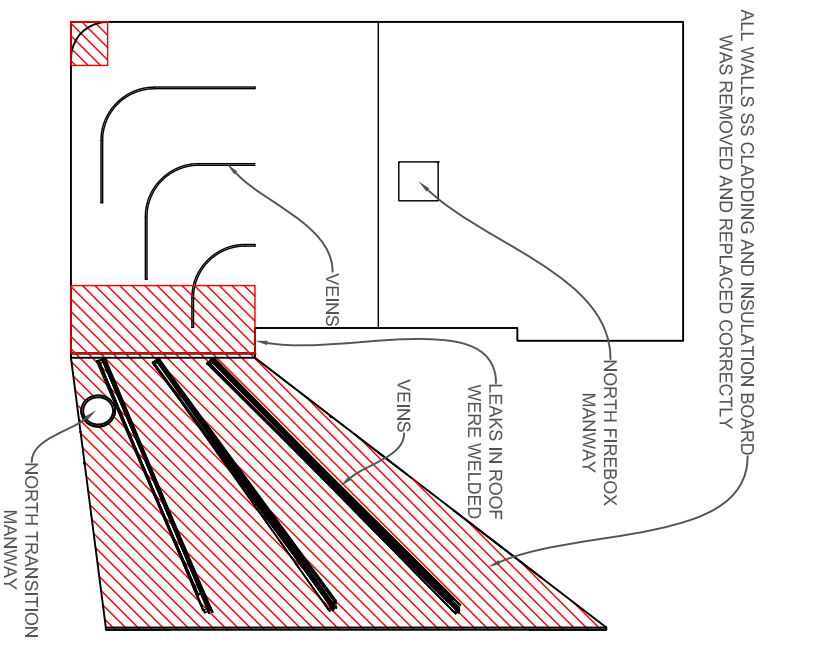
TOP VIEW

WEST VIEW TRANSITION



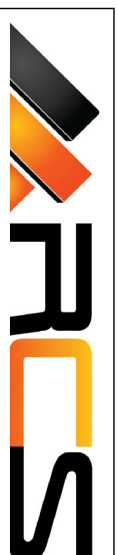
WEST VIEW

EAST VIEW



NORTH VIEW

NOTE: 304SS 3.5" X .5" STUDS WERE USED FOR ATTACHING INSULATION BOARD & 16 GA SHEETS. 2.5" WASHERS WAS THEN WELDED TO THE STUD BUT NOT THE SHEETING TO ALLOW FOR EXPANSION DURING OPERATION.
 NOTE: ALL MATERIAL WAS USED IN 304SS FOR HEATING PROPERTIES.



JOB TITLE:
#1 AOGI DUCT WORK REPAIRS

JOB LOCATION: INEOS NITRILES GREEN LAKE	UNIT: #1 AOGI REACTOR
DWG No.: RCS-20-0026-A1	PROJECT: DUCT WORK
DRAWN BY: H. WHATLEY	DATE: 7/26/2020
REVISD BY: N/A	DATE: -
CHECKED BY: M. WHATLEY	DATE: 7/28/2020
APPROVED BY: M. WHATLEY	DATE: 7/28/2020
SCALE: 1:10	REV: A
SHEET: 1 OF 1	

NOTE: VIEW POINTS DONT SHOW ALL ASPECTS OF THE STRUCTURE TO ENSURE CLARITY IN WHICH THE REPAIRS WERE DONE

This drawing is the property of Restoration Contractors Services LLC. Do Not Copy or reproduce in any way, unless given permission to do so.