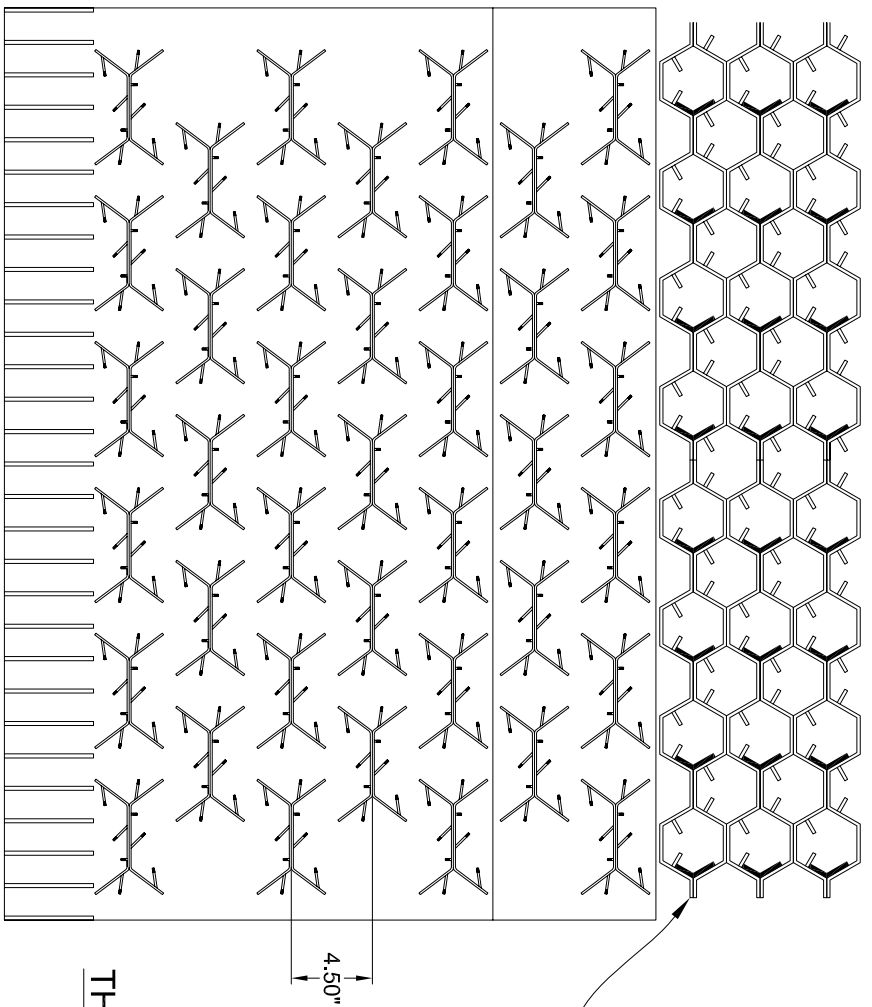


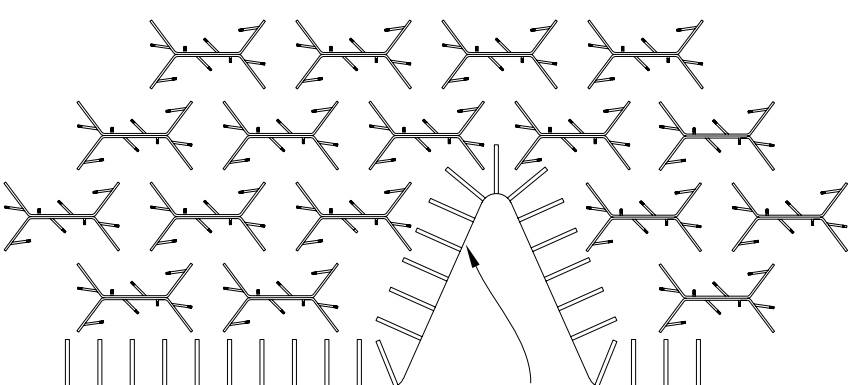
**THIS DETAIL GIVES AN DEMONSTRATION
IF ALL HE IS REPLACED WITH D-BARS**



**THIS DEMONSTRATES HEX
STILL USED WHILE S-BARS
ARE CHANGED WITH D-BARS**

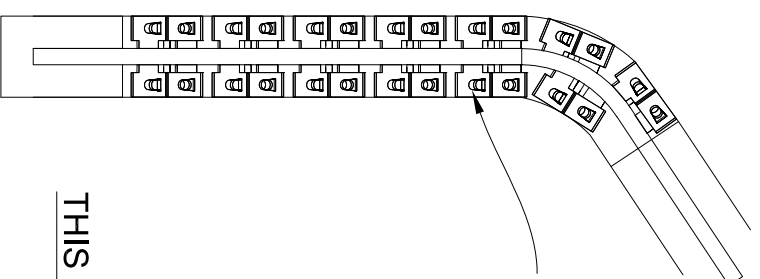
4.50"

**THIS DETAIL REFLECTS "VIEW 1A"
ON DRAWING NO. 2065-L**



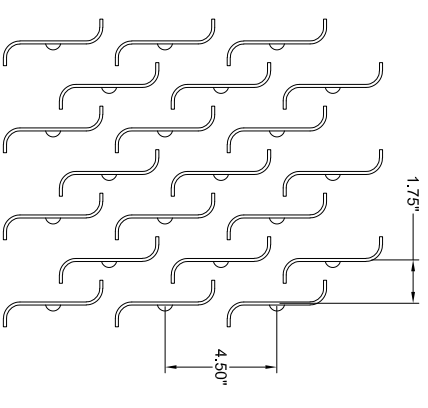
V - NOTCHES ON SKIRT

**THIS DETAIL REFLECTS "DETAIL 2B"
ON DRAWING NO. 2065-L**

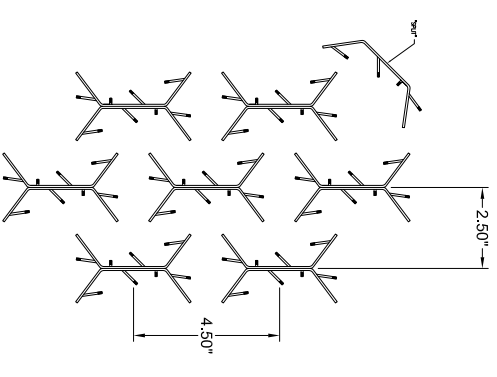


**1" S-BARS REPLACED
WITH 1" D-BARS**

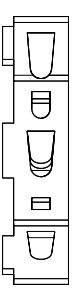
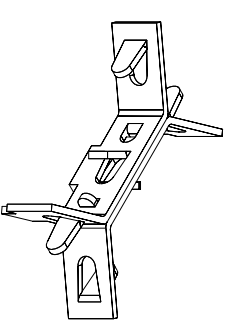
**THIS DETAIL REFLECTS "DETAIL 2E"
ON DRAWING NO. 2065-L**



**1" S-BAR Anchor Standard Spacing Layout
Approx. 18.3 Anchors per Sq Ft**



**1" D-BAR Anchor Severe Spacing Layout
Approx. 12.8 Anchors per Sq Ft**



1" D-BAR Anchor Detail



**JOB TITLE:
SPENT CAT. DISTRIBUTOR NEW ANCHOR**

EQUIPMENT NAME: FCCU-1241	UNIT:	PROJECT: VALERO PORT ARTHUR
DWG No. RCS-20-024A		
DRAWN BY: H. WHATLEY	DATE: 05/05/20	SIZE: D - 11x17
REVISD BY:	DATE:	SCALE: N/A
CHECKED BY: S. LANCIOS	DATE: 05/05/20	REV: A
APPROVED BY: M. WHATLEY	DATE: 05/05/20	SHEET: 1 OF 1