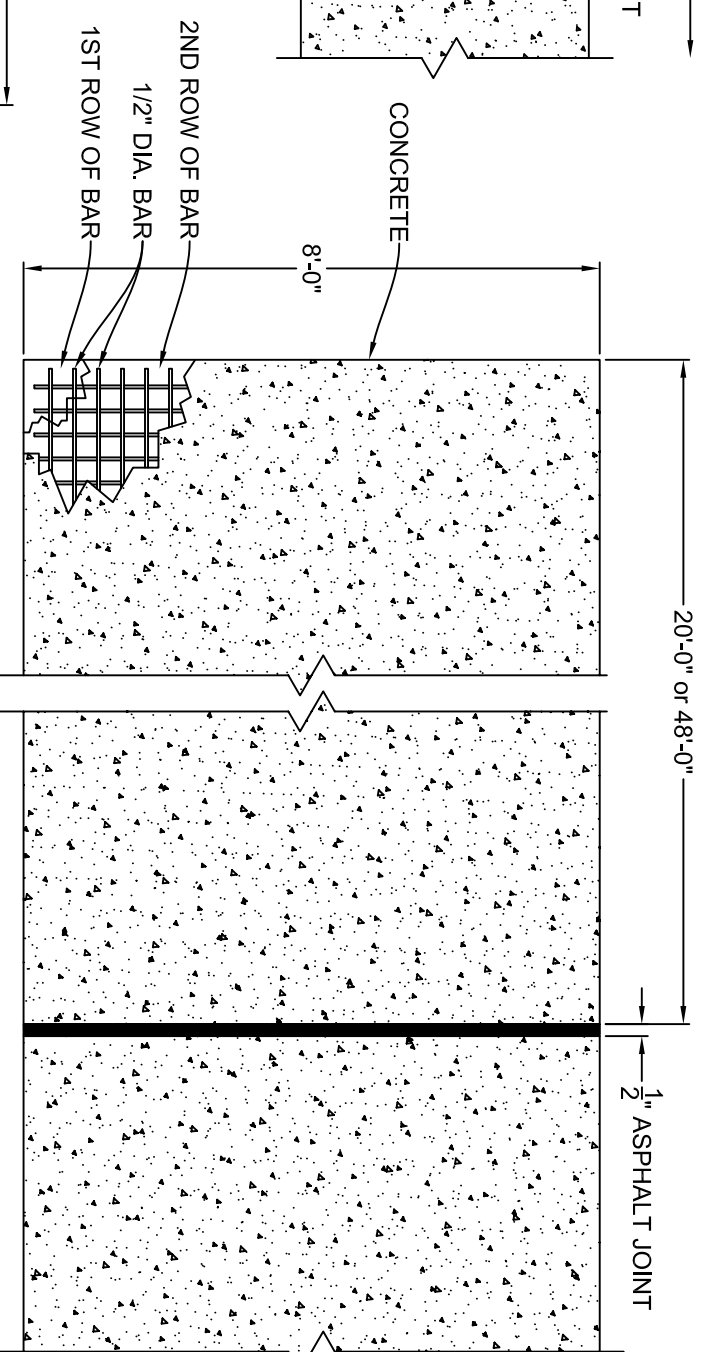
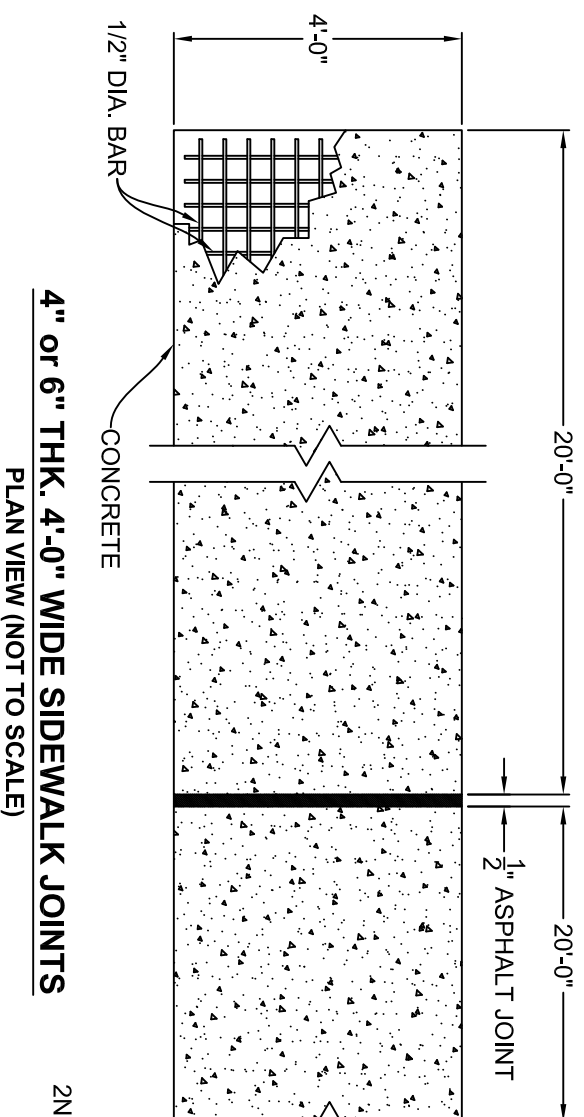
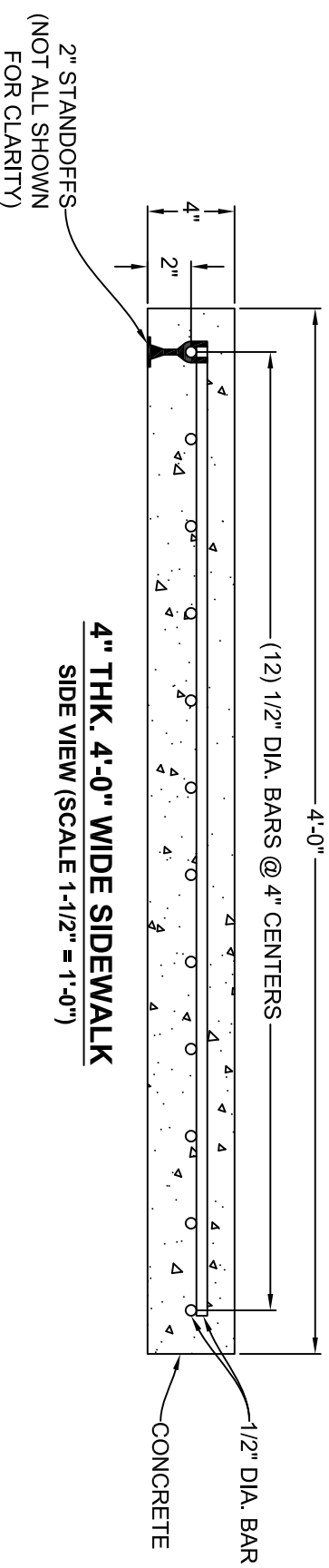


NOTE:
FOR THE 4" THICK AND 6" THICK
SIDEWALKS WITH A 4 FOOT WIDE
SIDEWALK THE 1/2" ASPHALT WILL BE PUT
IN 20 FOOT SPANS FOR CONVENIENCE

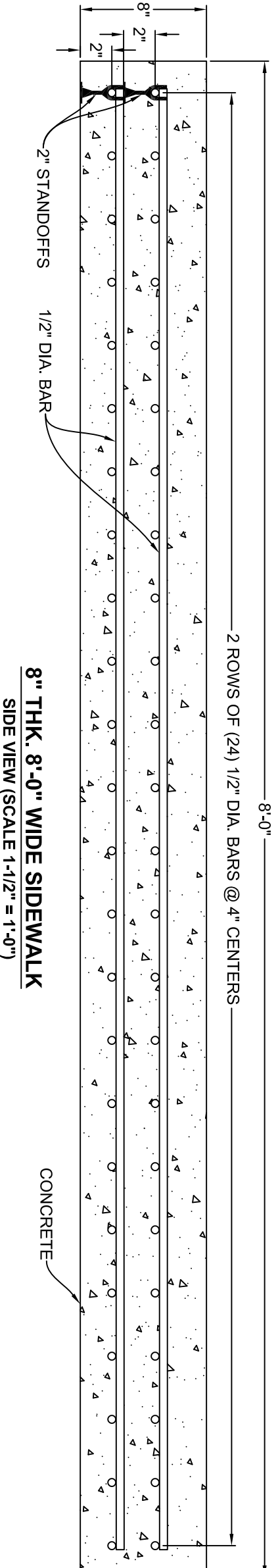
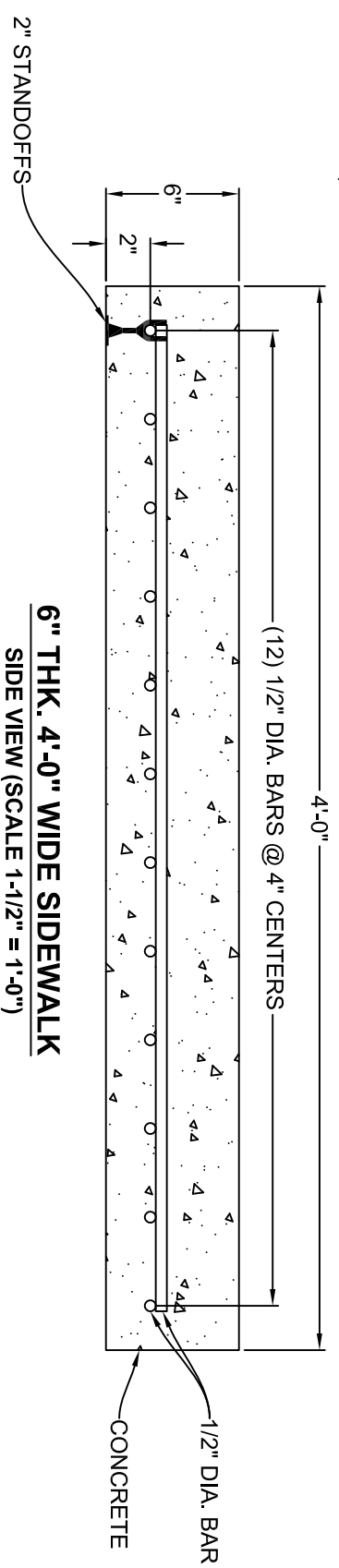


NOTE:
SOIL COMPACTED
AFTER STABILIZATION



NOTE:
FOR THE 8" THICK BY 8 FOOT WIDE SIDEWALK THE
1/2" ASPHALT JOINTS CAN BE PUT IN A 20 FOOT SPAN
OR A 48 FOOT DEPENDING ON PREFERENCE

NOTE:
ALL CONCRETE WILL BE
3000 PSI W/ 1.5" STONE



WARNING

IT IS POSSIBLE TO COME IN CONTACT WITH HAZARDOUS MATERIAL IN THIS WORK AREA - REFER TO THE CONTROL UNIT FOR HEALTH SAFETY DATA SHEET FOR ADDITIONAL INFORMATION PRIOR TO STARTING WORK. BY NO MEANS START WORK WITHOUT PROPER INFORMATION AND /OR PROTECTIVE EQUIPMENT. IT IS THE RESPONSIBILITY OF THE CONTRACTOR, COMPANY AND ALL OTHERS TO BE FULLY INFORMED, TRAINED, REVIEWED AND UPDATED CONCERNING ALL HAZARDOUS MATERIALS IN THE WORK AREA. IF IN DOUBT, INQUIRY MUST BE MADE BEFORE STARTING WORK.

SAFETY DIRECTOR: COLT ANDERSON



JOB TITLE: NRG CONCRETE CONSTRUCTION	
JOB LOCATION: NRG CEDAR BAYOU	UNIT: N/A
DWG No. RCS-19-0001-A1	PROJECT: CONCRETE CONSTRUCTION
DRAWN BY: H. WHATLEY	DATE: 4/11/2019
REVISD BY: N/A	SCALE: N/A
CHECKED BY: J. JOHNSON	DATE: 4/11/2019
APPROVED BY: J. JOHNSON	DATE: 4/11/2019
	SHEET: 1 OF 1