

*Safely Executing Turn-key Solutions
Through Value Driven, Integrated
Specialty Services.*

RCS offers a full spectrum of refractory services. Our API Certified Supervision can handle all your refractory needs, including demolition of existing linings, surface preparation, and installation of new refractory mines. Our experience with all types of refractories & installation techniques, including In Situ vibra-casting of large pieces of equipment, gunite, brick, pump/cast, pneumatic ramming, and wet gunning (shotcrete), is unparalleled in the industry. RCS employs their own certified welders for stick and stud welded anchor installations. In being at the forefront of our industry, RCS recognized opportunity to enhance our performance by investing in technology. We are pleased to now offer our suite of RAPID SOLUTION SYSTEMS that afford RCS significant opportunities to enhance our T/A efforts

Types of Fired Equipment:

- Heaters & Furnaces
- FCC Units
- Boilers
- Reformers (SMR's, ATR's, Primary, Secondary, & Hydrogen)
- SRU's & Thermal Reactors
- Thermal Oxidizers, RTO, and VTO's Incinerators

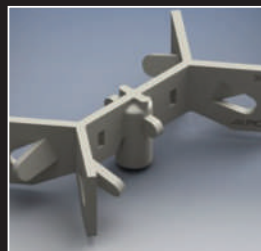
Advancements and Technologies:

- Hydrodemolition
- Silica Mitigation Solutions
- Hexavalent Chrome Mitigation Solutions
- Stud and IDA Welding Solutions
- Independent Anchoring Systems



D-BAR

Because of the independent nature, there is no need to fit and re-fit existing Hex material leading to quicker repair rates and offer variable layout patterns to best suit the anchoring requirements. The D-Bar utilizes three attachment points, which provide a superior attachment than traditional two legged anchoring systems.



By providing the same level of dependability as the D-Bar with the latest Inverted Drawn Arc (IDA) technology, RCS developed the X-Bar. Due to the amount of coverage per sq-ft vs the standard IDA anchor, the X-Bar is able to reduce installations cost while maintaining enhanced installation rates. Unlike the D-Bar, the X-Bar utilizes a precision casted attachment point, which provides a superior attachment with repeatable tolerances.

X-BAR