



# **INTEGRATED SPECIALTY SERVICES**

SAFELY EXECUTING TURN-KEY SOLUTIONS THROUGH  
VALUE- DRIVEN, INTEGRATED SPECIALTY SOLUTIONS.



## OUR MISSION

---

Founded in 2007 as Refractory Construction Services Co, LLC with the singular focus of providing refractory repair and installation services, RCS has since evolved into a premier provider of integrated project solutions. We evolved into a multi-tool option for turn-key project needs by incorporating specialty welding and mechanical expertise as well as expanding our soft craft offerings to include access solutions, insulation, and abatement.

RCS is focused on delivering exceptional project results, accomplished through project planning, execution, and monitoring. We operate with the understanding that a well-developed plan is crucial to successful project execution. RCS considers the importance of immediate, efficiently coordinated responses to unplanned and emergency work. We established a safety culture wherein safe work practices are kept at the forefront of our employees' mindset. By investing in each and every employee through indoctrination, in-house craft training, and incentivizing, we built a workforce that is empowered to take responsibility for themselves, their fellow workers, our clients, and the surrounding environment.

The RCS management team consists of experienced project managers and supervisors, all carrying industry certifications. We safely and successfully execute numerous large turnaround projects on a wide array of industrial equipment while adhering to committed budgets and timelines.



Building on a solid foundation of proven successes, combined with our perpetual drive for excellence, RCS is committed to continue safely executing turn-key solutions through value-driven, integrated specialty services that set the benchmark for customer expectations.

**We look forward to becoming your preferred industrial contractor, and we thank you for placing your confidence in us.**





**RCS IS FOCUSED ON DELIVERING OUR CLIENTS SUPERIOR PROJECT RESULTS, WHICH WE ACCOMPLISH THROUGH PROFESSIONAL PROJECT PLANNING, EXECUTION, AND MONITORING.**

## SAFETY

---

At RCS, “goal zero” is not only a slogan, it’s the foundation of our safety culture. Our employees are empowered to be accountable for their actions and those around them. This environment created a workforce that has been recognized numerous times as one of the safest in the industry.

- Recognized by ISTC for 3 years without a recordable injury
- Recipient of many Contractor Safety Award
- Over 4.5 million man hours worked without a lost time accident

## QUALITY

---

Our commitment to quality extends throughout our corporate management of every member on our project execution teams. As part of our efforts, RCS Supervision carries many certifications, including API 936, NACE, CWI, NCCER, and more. Our experienced project staff and highly skilled craftsmen are dedicated to providing specialized services in a consistent and reliable manner that has set the benchmark for customer expectations.



# FIRED EQUIPMENT SERVICES

---

RCS offers our clients true turn-key solutions for all of their fired equipment needs. We have you covered whether you require refractory repair, burner replacement, a complete retube, or anything in between. By seamlessly integrating our services into your workflow, RCS provides blind to blind coverage for all of your heater, boiler, and furn needs.

- Refractory
- Specialty Welding and Specialty Mechanical
- Access Solutions
- Insulation and Abatement
- Coatings and Linings





A composite industrial image. The background features a tall, red-and-white striped smokestack with a red light at the top, set against a cloudy sky with numerous small, glowing yellow dots. In the foreground, a welder wearing a blue protective suit and mask is working on a metal structure, creating a bright, intense light and a large spray of sparks. The scene is illuminated by warm, yellowish-orange light, likely from industrial lamps.

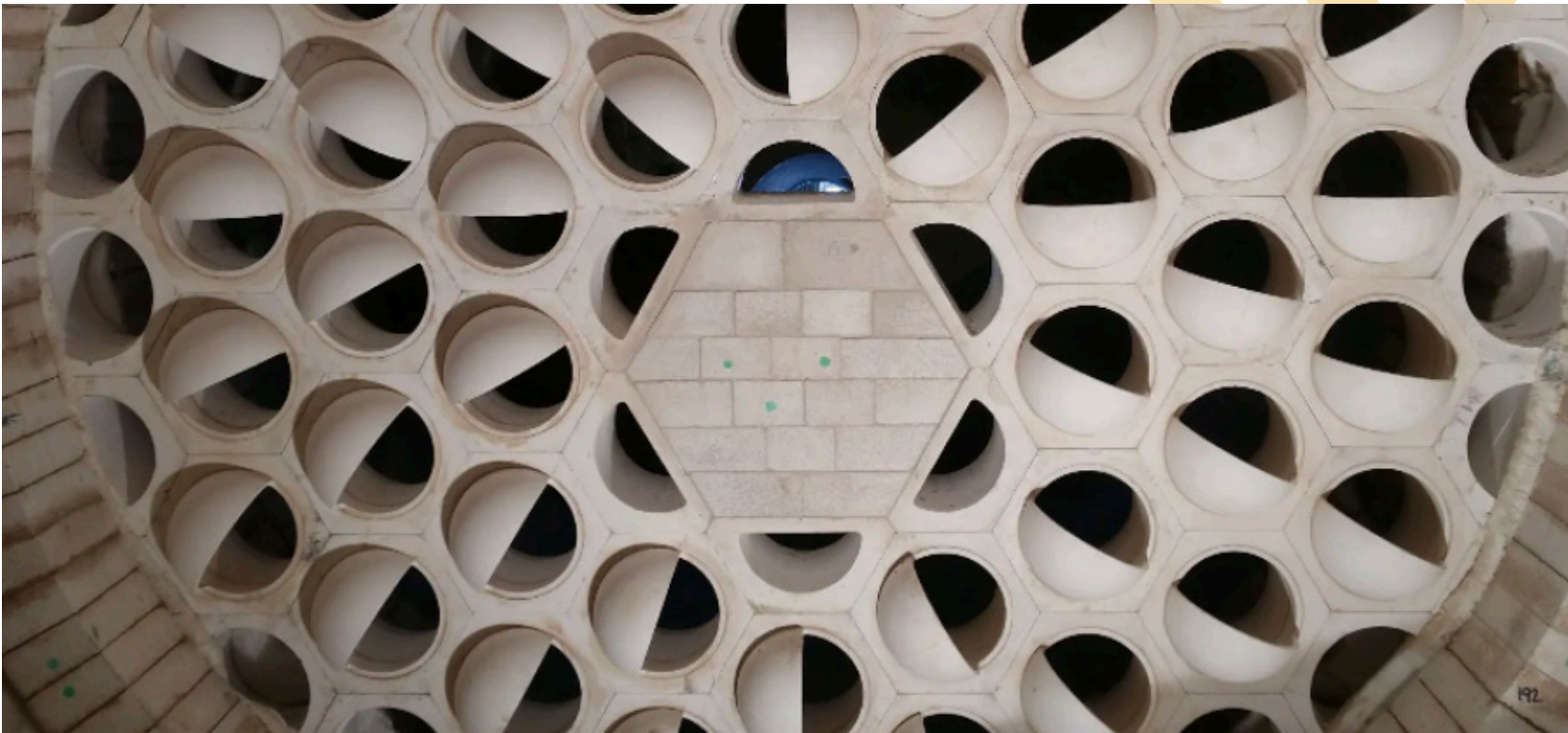
RCS OFFERS OUR CLIENTS TRUE  
TURN-KEY SOLUTIONS FOR ALL  
THEIR FIRED EQUIPMENT NEEDS.



# REFRACTORY

---

RCS offers a full spectrum of refractory services, and our API Certified Supervisors can handle all your refractory needs from demolition of existing linings and surface preparation to installation of new refractory. We are experienced with all types of refractory installations, including In Situ vibra-casting of large pieces of equipment, gunite, brick, pump and cast, pneumatic ramming, and wet gunning.



We also employ certified welders for stick and stud welded anchor installations. As leaders in our industry, we recognize the opportunity to enhance our performance by investing in innovative technology, and we are pleased to offer our new suite of Rapid Solution Systems that allow enhancement of our T/A efforts.

**RCS OFFERS A FULL SPECTRUM  
OF SERVICES THAT COVER ALL OF  
YOUR REFRACTORY NEEDS WITH  
OUR CERTIFIED SUPERVISORS.**



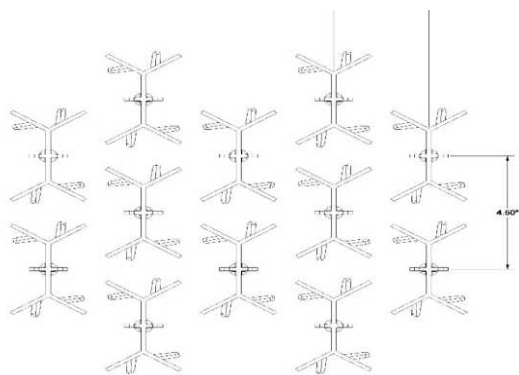
## D-BAR

There is no need to fit and refit existing hex material due to their independent nature. This allows quicker repair rates and offers variable layout patterns to best suit the anchoring requirements. The D-Bar utilizes three attachment points, which provide a more secure attachment than traditional two-legged anchoring systems.

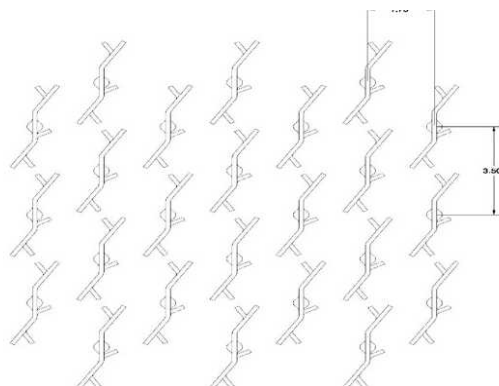


## X-BAR

Improving upon the proven integral performance of the D-Bar, RCS developed the X-Bar, our IDA weld-able options. Due to the amount of coverage per square foot versus the standard IDA anchor, the X-Bar is able to reduce installation costs while maintaining enhanced installation rates. Unlike the D-Bar, the X-Bar utilizes a precision casted attachment point to provide a stronger attachment with repeatable tolerances.



**1" X-BAR Anchor Spacing Layout**  
Approx. 12.8 Anchors per Sq Ft



**1" K-BAR Anchor Spacing Layout**  
Approx. 23.5 Anchors per Sq Ft

# SILICA MITIGATION PROGRAM

## Committed to OSHA Standards – Silica Mitigation

The OSHA standard (29 CFR 1926.1153) requires employers to limit worker exposure to respirable crystalline silica and to take additional steps to protect workers from contact with harmful substances. Employers can either use a control method of the construction standard, or they can measure a worker's exposure to silica and independently decide which dust controls work best to limit exposure in their workplaces to the permissible exposure limit (PEL).

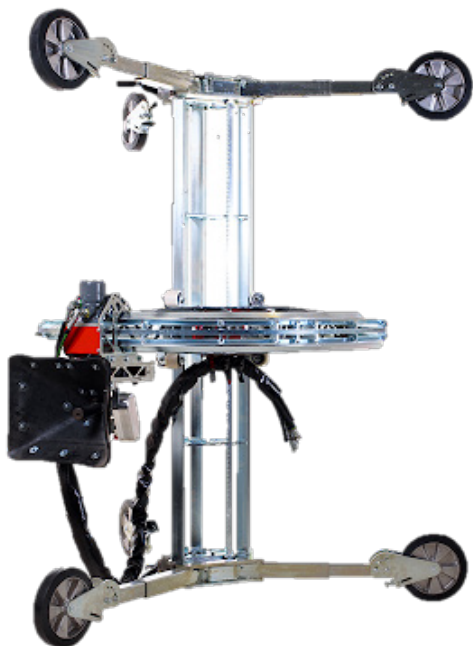
RCS has invested a significant amount of time and dollars to develop procedures and equipment that aim to mitigate the crystalline silica footprint within



**AS A LEADER IN THE INDUSTRY FOR REFRACTORY SERVICES, RCS LEANS INTO THE CHALLENGES OF NEW SAFETY REQUIREMENTS AND REGULATIONS. WE STRIVE TO CREATE A SAFER WORKING ENVIRONMENT BY LOOKING AHEAD TO NEW TECHNOLOGIES.**

the workplace. Leveraging our field experience and performing numerous trials, RCS developed and deployed “proprietary” enhancements to equipment, which achieved results well below the detectable limits set forth by the new standard. Although RCS has been able to achieve industry-leading results for mitigating crystalline silica in the workplace, we are continuing to explore additional techniques and technologies that will support this initiative.





## HYDRODEMOLITION

Utilizing Aqua-Jet technology, RCS practices hydrodemolition techniques in certain applications instead of traditional removal methods. By utilizing water and pressure as a means of removal, our teams are capable of removing refractory and concrete at enhanced rates while reducing and nearly eliminating silica exposure to workers.





## SPECIALTY WELDING AND MECHANICAL SERVICES

---

You can count on RCS to provide true turn-key solutions for your heater, boiler, and furnace needs. RCS holds “R,” “S,” and “U” stamps and can perform any necessary specialty mechanical work—including tube repairs, retubes, steam and mud drum repair, tube rolling, and duct work. Our first-class welders and craftsmen are also equipped to handle any specialty welding, piping, and fabrication that your project may require.

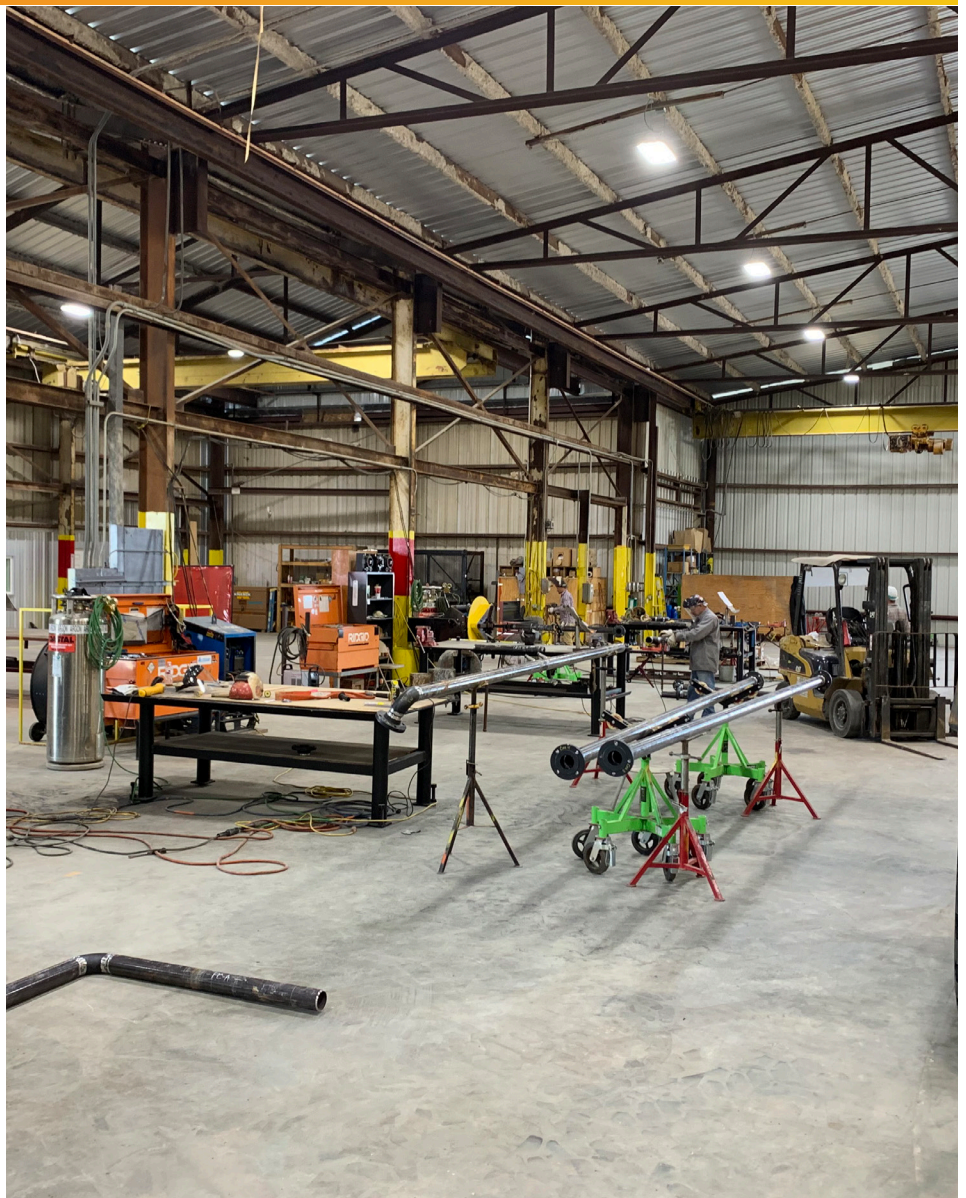
### Our Services Include:

- Maintenance Services
- Turnaround Services
- Construction
- Complete Turn-key Fired Equipment Solutions
  - Heaters
  - Boilers
  - Furnaces
- Complete Heat Transfer Equipment Solutions
  - Heat Exchangers
  - Fin Fans
  - TLX
  - Condensers
  - Chillers
  - Ferrule Installation
- Specialty Welding Services
- Hydraulic Torquing and Tensioning
- High Pressure Exchanger Services
- General Field Machining
- Testing, Plugging, and Special Isolations
- Piping and Fabrication
- Pressure Vessel and Drum Repairs
- Manual Overlay and Resurfacing
- Coded Tower and Drum Welding
- Nozzle Fabrication and Installation
- Total Project Planning and Management



Our shop fabrication capabilities are built around serving the midstream and downstream oil and gas industry. By employing skilled craftsmen in our state of the art fabrication facility, RCS can provide clients customized solutions for all of their process needs, including:

- Pipe Fabrication – All Alloys
- Small Pressure Vessels
- Skid and Modular Units
- Heat Transfer Equipment Repair and Retube
- Convection Boxes
- SRU Components





# ACCESS SOLUTIONS

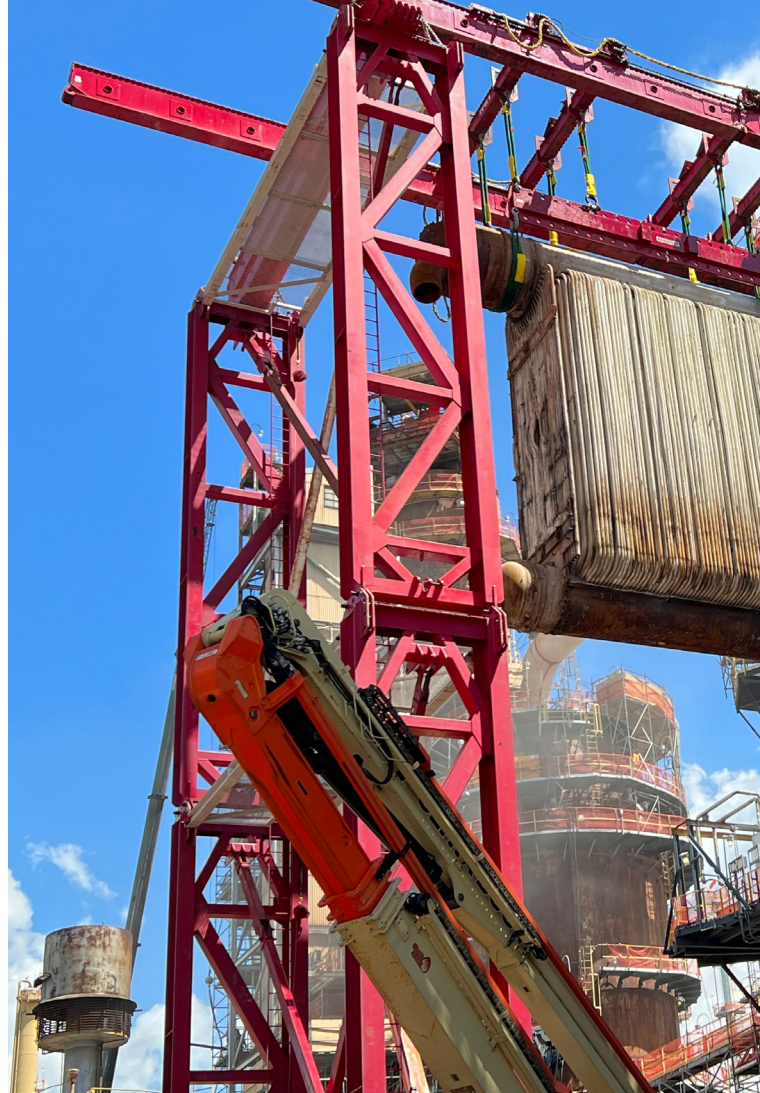
## SCAFFOLDING AND ROPE ACCESS

The ability to provide Access Solutions on a project is one of the key components to supplying clients with a truly integrated approach to specialty services. This capability allows RCS to provide an unparalleled approach to providing a Turn-Key solution to Fired Equipment services. RCS's access solutions are achieved through the use of the latest inventory of mobile and stationary systems, multiple Scaffold yards, Scaffold tracking, and Rope Access. RCS has the experience and resources necessary to handle the scaffolding needs for maintenance, turnarounds, new construction, or capital work projects.

Along with scaffolding, RCS provides Rope Access Mechanical and Inspection work. Building on a solid foundation of proven project methodologies, combined with a perpetual drive for excellence, RCS is committed to continue safely executing turnkey rope access solutions through value-driven, integrated specialty services that set the benchmark for customer expectations.

We look forward to becoming your preferred rope access contractor, and we thank you for placing your confidence in us.

Detailed estimates and precise tracking capabilities provide our clients with accurate budgets, forecasting, current and historical data to monitor productivity and costs. Either as a standalone resource or coupled with our supporting integrated specialty services, RCS can provide a complete Turn-Key solution on your next project.





# ROPE ACCESS SERVICES

**Boilermaker**

**Ironwork**

**Pipefitter**

**Specialty Welding Services**

- Structural
- Pipe
- Specialty Metals - Per Job Basis

**Electrical**

- Performs Labor for Demo
  - Fab Cable Trays
  - Run Wires
- \*does not perform any final tie ins

**Instrumentation**

- Only Labor
- No Calibration or final tie ins

**Painting**

**Insulation**

**Asbestos Abatement**

**Fireproofing**

**Piping & Structural Members**

- Demolition & Installation

**Operations Assist**

- Closing/opening valves
- Car seals
- Lock out/tag out

**Bull Rigging**

**Industrial Maintenance**

**Pressure Washing**

**Installation of:**

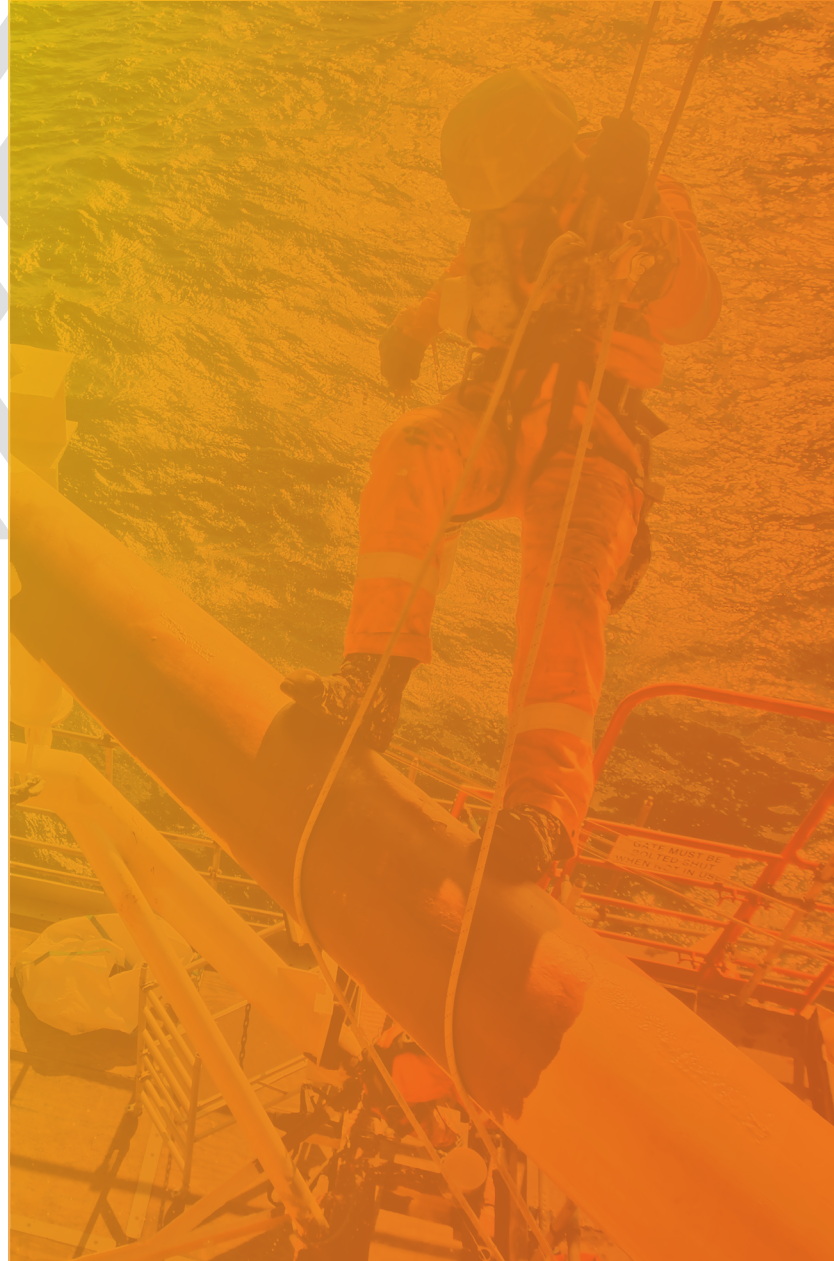
- Safety Netting
- Catch Platforms

**LOKRING**

**FRP/Composite Wraps**

- CSNRI
- SynthoGlass XT
- Thermo Wrap Inspectable
- Dragon Industrial Wraps
- Dragon Industrial Wrap
- Dragon Hydra Wrap

**Removal of debris and excess material**



## INSPECTIONS

**Full API inspection and reporting**

- API 510, 570, 936

**UT**

- Thickness

**PT**

**MT**

**VT**





## COMPLIMENTARY SERVICES

---

Many of the services RCS offers complement each other to provide a one-stop shop for our clients. Our ability to provide a bundled package of core and complementary services allows for better workflows and enhanced productivity, ultimately leading to savings for our clients.





**FIREPROOFING**



**TANK LININGS/INDUSTRIAL COATINGS**



**LIGHT CIVIL**





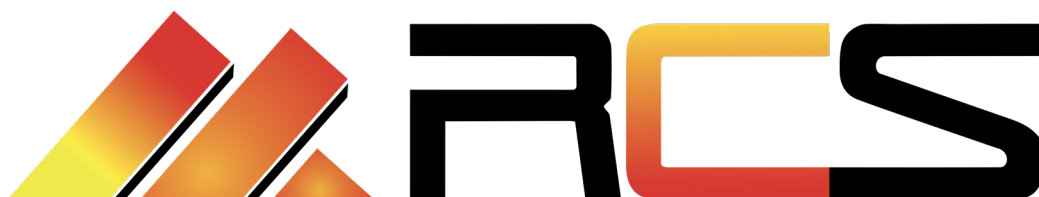
## **CORROSION PROTECTION**



## **INSULATION/ABATEMENT**







INVISTA™



TOTAL



INEOS  
STYROLUTION



**Corporate Office and  
Fabrication Facility**

1109 W. 13th St.  
Deer Park, TX 77536

**Port Arthur Construction Office and  
Fabrication Facility**

960 Highway 365  
Port Arthur, TX 77640

**Corpus Christi Construction Office**

4234 Beacon St.  
Corpus Christi, TX 78408

**Louisiana Construction Office**

1716 S Sonny Avenue  
Gonzales, LA 70737

**Phone:** 281-335-3633

**Fax:** 281-538-3804

[www.refconserv.com](http://www.refconserv.com)